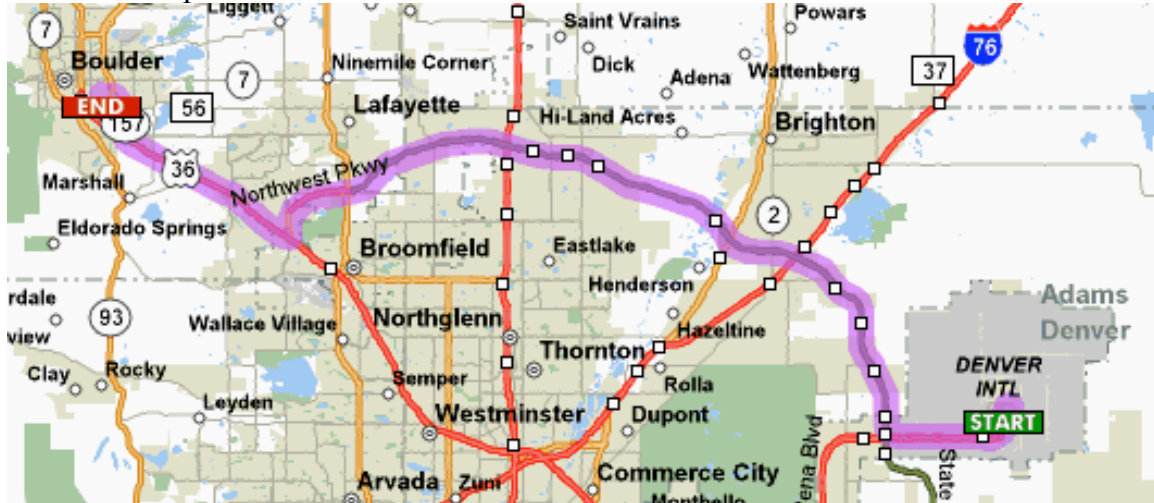


# LASP Travel Information

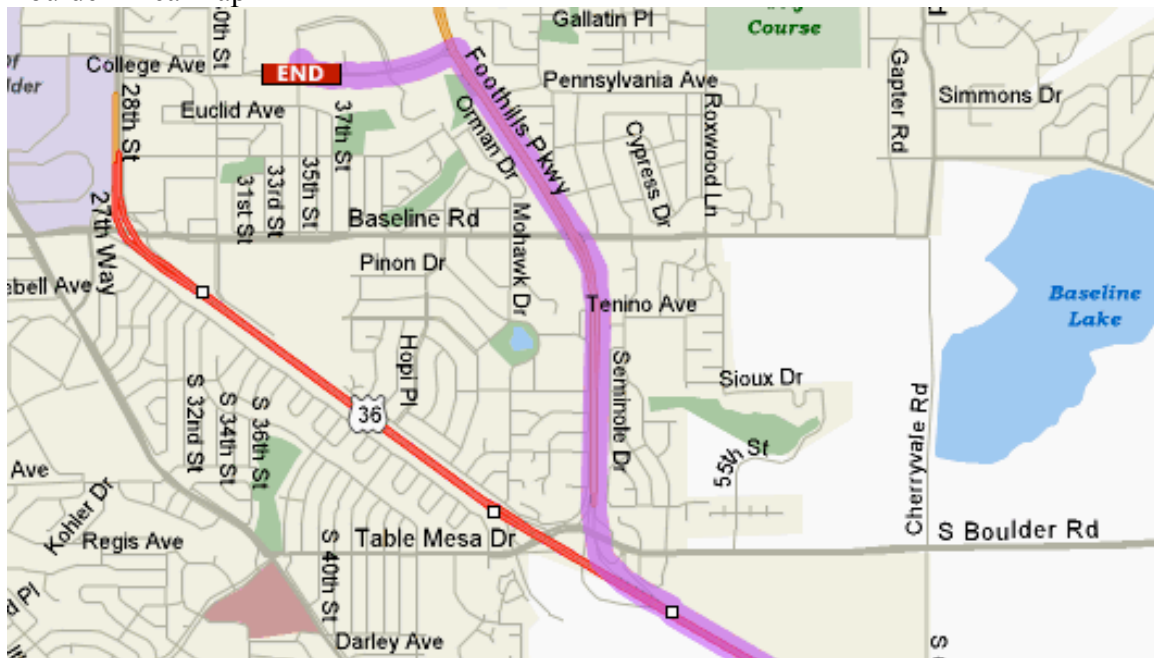
Point of Contact: Bill Peterson, eGY Secretary  
(303) 443-6888 (Home), (303) 492-0686 (Office)

[Directions from Airport to LASP](#)  
[Mapquest directions page](#)

## Overview Map










## Boulder Area Map



Driving directions below

**START** **Denver International Airport**  
(DEN): (303)342-2000  
8500 Pena Blvd, Denver, CO 80249,  
US

**END** **1234 Innovation Dr**  
Boulder, CO 80303-7814, US

Maneuvers	Distance
 <b>1:</b> Start out going NORTH on PENA BLVD.	0.2 miles
 <b>2:</b> Turn SLIGHT RIGHT toward TERMINAL EAST.	1.9 miles
 <b>3:</b> Stay STRAIGHT to go onto PENA BLVD.	3.4 miles
 <b>4:</b> Take the E-470 TOLLWAY N exit- EXIT 6B- toward FORT COLLINS.	0.9 miles
 <b>5:</b> Merge onto E 470 N (Portions toll).	18.0 miles
 <b>6:</b> E 470 N becomes NORTHWEST PKWY W (Portions toll).	8.6 miles
 <b>7:</b> NORTHWEST PKWY W becomes STORAGE TEK DR / S 96TH ST.	0.3 miles
 <b>8:</b> Merge onto US-36 W.	6.2 miles
 <b>9:</b> Merge onto FOOTHILLS PKWY / CO-157 N toward C U STADIUM.	1.9 miles
 <b>10:</b> Turn LEFT onto COLORADO AVE.	0.4 miles
 <b>11:</b> Turn RIGHT onto INNOVATION DR.	<0.1 miles
 <b>12:</b> End at <b>1234 Innovation Dr</b> Boulder, CO 80303-7814, US	

**Total Est. Time:** 44 minutes      **Total Est. Distance:** 42.27 miles

## Ground Transportation

### **SuperShuttle:**

<http://www.yellowtrans.com/yellowtrans4.htm>

(303) 444-0808

#### DIA to Boulder:

- Drops off at Boulder hotels, residential and business addresses
- Leaves DIA every hour from 7:10 am to 11:10 pm
- No reservations from DIA to Boulder
- Pay at the counter: \$20-\$25
- Supershuttle check-in located in the main terminal near the fountain (Level 5, Baggage claim)

#### Boulder to DIA:

- Residential and Business pick-up available 5:30am to 9:00pm
- Reservations required

### **RTD Bus Service:**

[www.RTD-Denver.com](http://www.RTD-Denver.com) (look under “skyRide, Route AB, W-Bound”)

(303) 299-6000

- One way to several Boulder park-n-rides and the downtown bus station
- Leaves DIA hourly from 6:20am to 11:20pm
- Check at the “Ground Transportation” desk at DIA (main terminal near the fountain)
- ~ \$12.00
- Takes approximately 1 hr and 30 minutes w/no transfers
- From the Boulder bus station, take a cab for a few dollars

### **Yellow Cab:**

<http://www.yellowtrans.com/yellow%20cab2A.htm>

(303) 777-7777

- Approximately \$85 one way from DIA
- Takes about 1 hour

### **Boulder Local Cab:**

(303) 442-2277

### Boulder Accommodations Closest to LASP

(Mention that you are attending a CU conference - you might get a discount.)

<b>Best Western Boulder Inn</b> 770 28th Street Boulder, CO 80303 <a href="http://boulderinn.com/">http://boulderinn.com/</a> 303- 449-3800; 1-800-233-8469	Free breakfast, free wireless internet, refrigerators and microwaves available, pool, hot tub, sauna, health club, business center, full service restaurant and lounge, adjacent to Hwy 36. \$64-\$94
<b>Boulder Outlook Hotel &amp; Suites</b> 800 28th Street Boulder, CO 80303 <a href="http://www.boulderoutlook.com/">http://www.boulderoutlook.com/</a> 303-443-3322; 1-800-542-0304	165 rooms, restaurant, lounge, indoor pool, hot tub/jacuzzi, exercise facility, adjacent to Hwy 36. \$90-\$125
<b>Broker Inn</b> 555 30th Street Boulder, CO 80303 <a href="http://www.boulderbrokerinn.com/">http://www.boulderbrokerinn.com/</a> 303-444-3330; 1-800-330-5407	116 rooms, restaurant, lounge, pool, hot tub/jacuzzi, continental breakfast included, Victorian ambiance in modern full-service hotel, passes to adjacent health club, just off Hwy 36. \$90-\$150
<b>Golden Buff Lodge/Best Western</b> 1725 28th Street Boulder, CO 80303 <a href="#">Hotel Website</a> 303-442-7450; 1-800-999-2833	112 rooms, restaurant, heated pool, weight room, jacuzzi, microwave, refrigerator, walk to shopping and restaurants, on Hwy 36. \$79-\$109
<b>Hotel Boulderado</b> 2115 13th Street Boulder, CO 80302 <a href="http://www.boulderado.com/">http://www.boulderado.com/</a> 303-442-4344; 1-800-433-4344	160 rooms, restaurant, lounge, downtown Boulder, National Register Historic Landmark, elegant accommodations in Victorian tradition. \$159-\$275
<b>Marriott Inn</b> 2660 Canyon Blvd. Boulder, CO 80302 <a href="#">Hotel Website</a> 303-440-8877; 1-800-228-9290	155 rooms, restaurant, lounge, pool, hot tub/jacuzzi, exercise facility, full spa, central location, full-service, boutique shops. \$159-\$269
<b>Millennium Harvest House</b> 1345 28th Street Boulder, CO 80302 <a href="#">Hotel Website</a> 303-443-3850; 1-800-545-6285	269 rooms, restaurant, lounge, heated pool, fitness room, tennis courts, hot tub/jacuzzi, garden, on the Boulder Creek bike path. \$150+

Other hotels and information at:

<http://www.bouldercoloradousa.com//listings/index.cfm?catID=1>

## General Information

DIA Website: [www.flydenver.com](http://www.flydenver.com)

Boulder Information: <http://bouldercoloradousa.com>

Boulder WebCams:

<http://www.colorado.edu/webcam>

<http://9news.com/9live/boulder9.asp>

<http://www.rap.ucar.edu/staff/tardif/webcam.htm>

Boulder Weather Conditions:

[National Weather Service Forecast](#)

[Weather Underground](#)